



Lincolnshire Gateway  
Academies Trust



**Scartho**  
Gateway  
Academy

**Section 10 Consultation**

**February 2024**





## **Background**

Scartha Gateway Academy will be built on land off Matthew Telford Park in Scartha over the next 12 months by North East Lincolnshire Council-appointed contractors, having been granted planning permission.

Lincolnshire Gateway Academies Trust was awarded the contract to run the school by the council in 2023. It will take responsibility once the academy is built.



## **This consultation**

In accordance with the Department for Education requirements, Lincolnshire Gateway Academies Trust has launched a public consultation which will run from Friday 9 February 2024 until Friday 15 March 2024.

This consultation welcomes the views of all our stakeholders and is guided by the requirements of Section 10 of the Academies Act 2010.

This consultation will look at what the academy provides and demonstrate our stakeholders support us in running the Academy for the benefit of the community.

At the end of this document, there is an opportunity for you to share your views.



### **Why a new school is needed**

Scartho Gateway Academy will be built on land off Matthew Telford Way, adjacent to the new Aldi and at the heart of Scartho Top. Hundreds more homes are planned for the development over the coming years, hence the need for a new primary school to serve this growing community.

This means the community is going through a process of expansion and new school places are required.

We see the school playing a vital role here, particularly for families with young children. The school will go out of its way to provide opportunities for families to meet with each other and to support the building of a larger local community.



### **Our Vision**

### **Ambition**

For our children, pupils & students in all our academies

- Believing that there are no limits on what they may achieve.
- Seeking out and developing their talents.
- Identifying and helping them overcome any barriers to their learning.
- Doing all we can to prepare them for the next steps in their life journey.

For the community & neighbourhood around each academy and beyond

- Playing our part in realising the ambitions of the community.
- Making each academy a community asset adding value to its resources.
- Using community assets where possible to resource our academies
- Playing our full part in the local civic structures.



## **Collaboration**

For our children, pupils & students in all our academies

- Staff collaborating across the Trust and beyond to ensure a rich, relevant and engaging curriculum for every learner.
- Staff collaborating across the Trust and beyond to ensure a pedagogy that develops curiosity and secures progress.
- Pupils collaborating to build a supportive learning and recreational culture.
- Pupils being enabled to see how collaboration benefits themselves and others.

For the community & neighbourhood around each academy and beyond



- Collaborating with other community groups which share our intentions.
- Collaborating with other schools in the neighbourhood to benefit all young people.
- Collaborating with the local authorities to ensure the best educational provision across the area.
- Playing our full part in the local civic structures.



## **Community**

For our children, pupils and students in all our academies

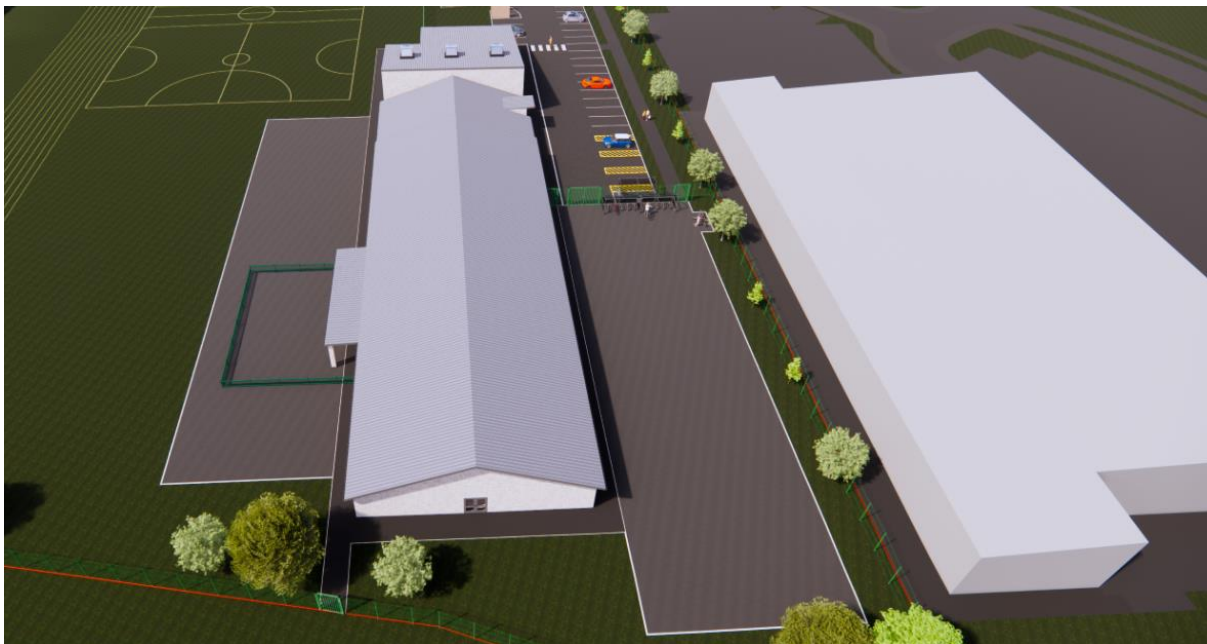
- Having a sense of belonging to a safe community.
- Playing an active part in developing a community in each academy.
- Building pride in being a member of the Trust community.
- Understanding the responsibilities of being a member of an academy community.

For the community and neighbourhood around each academy and beyond

- Sharing our assets with the community.
- Including wider stakeholder groups.
- Tapping into community assets.
- Playing our full part in the local civic structures.



### **Building Information**



Scartho Gateway Academy is being built by a contractor appointed by North East Lincolnshire Council. The council will oversee the build project. Lincolnshire Gateway Academies Trust will take responsibility for running the school once it is built.

### **Admissions**

Lincolnshire Gateway Academies Trust concluded its consultation on its admissions policy on 29 January 2024.

First Admissions to reception in September 2025 will need to be made via North East Lincolnshire Council and for other year groups by requesting an application form from the Academy Trust.

Scartho Gateway Academy's admissions will be governed by the Admissions Code 2021 and The Schools Admissions Appeal code 2022. The Admissions Authority for the Academy is Lincolnshire Gateway Academies Trust.

The Academy will build its numbers slowly, the aim being to have one reception class and a combined class in Years 1 and 2 and Years 3 and 4 initially. In 2025, there will not be a Year 5 or 6 class.

Eventually, there will be 30 in a class across the seven primary age groups, leading to 210 much-needed places.

There will also be a 12-place provision to support children who have social and emotional needs.



## **Curriculum**

We are in the process of planning our curriculum for the opening of Scartho Gateway Academy in September 2025. We already have a very clear vision as to what the curriculum will consist of, as it will be based on a similar ethos to the current primary academies within our Trust.

However, a key element of our Trust is that all schools are unique and we pride ourselves on not applying a 'one size fits all' approach. Therefore, the curriculum will be specific to Scartho Gateway Academy and the community it will serve.

Though we have a firm idea as to what we will teach and how we will teach, elements of the curriculum must, in our view, reflect the locality and families of Scartho and the surrounding locality. Importantly, we will spend the next 18 months

engaging closely with the community to help construct the finer details of our curriculum.



### **The consultation process**

We would like to hear comments from all our stakeholders about the new Academy to ensure it meets the needs of the community which we serve.

How to give your feed back to the consultation:

Complete our online  
Questionnaire

[Click here](#)

Or scan the QR code below

Scartho Gateway Academy



Email us at:

[consultation@lincolnshiregateway.co.uk](mailto:consultation@lincolnshiregateway.co.uk)

Send us a letter:

Consultation  
Lincolnshire Gateway Academies Trust  
Gateway House  
North Holme Road  
LOUTH  
LN11 0HG

[Attend our drop in clinic](#)

Monday 11 March 2024: 3pm-7pm

The Conference Centre  
Waltham Tollbar Academy  
Station Road  
New Waltham, Grimsby  
DN36 4RZ



